

NVR Quick Operation Manual

User notice

Before use, please read the manual carefully and strictly follow it during use. Thank you for purchasing this product. Service website: <https://fealushon.com/smartcnet-nvr/>



Scan the code in the mobile browser to enter

Special statement

This manual describes only the basic operations.

This manual describes the RS neutral style, for example, different products, interface styles may be inconsistent, specific to the actual subject

In order to adapt to different types, this manual won't list for each specific operation. Our company reserves the right of final interpretation of it.

Product specification content will be updated in real time, without prior notice.

Instructions may include technical inaccuracies or inconsistent with product features or printed the wrong place, please refer to the Company's final interpretation shall prevail.

Installation precautions

The device shall be kept away from humid, high temperature and strong magnetic environment, and then place it in a well ventilated place;

Please use the SATA hard disk purchased through regular channels,

Please ensure that the device is properly grounded, the power supply can not exceed the power supply voltage range, it is recommended to use the standard power supply.

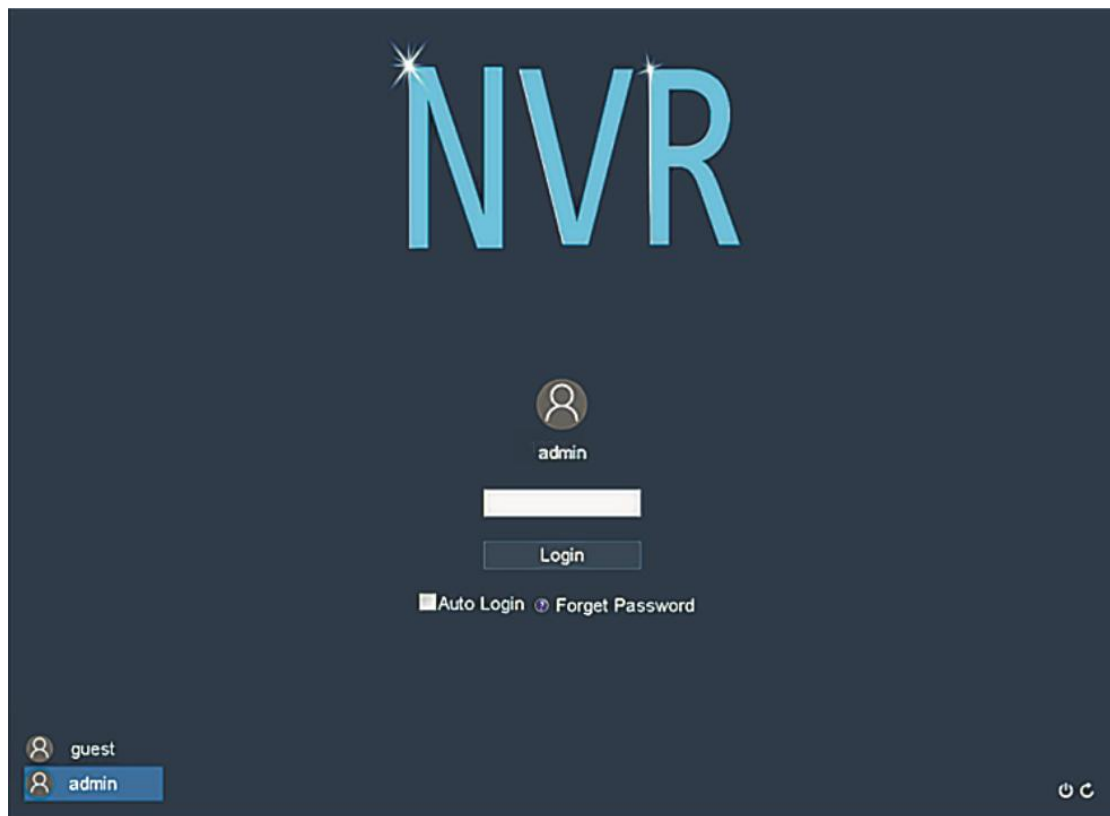
Do not directly cut off the power when the device is running, Shut down the device from software and then cut off the power to prevent the hard disk from being damaged.

Basic operations

1. Login

After the device boots up, the user must login and the system provides the corresponding functions according to the permissions of the logged in user.

When the device is delivered, there are two preset users: admin and guest, no password by default. The factory preset user of admin is with superuser privileges; the factory preset user of guest is with permissions for preview and video playback.




■ Password Protection:

if the password is entered wrong for 5 times consecutively, there will be alarm to lock the account(after the system reboot or half an hour, the locked account will be unlocked automatically). For security reasons,please change the user name and password in the "User Management" in time.

■ Mobile phone monitoring

1. Cloud settings

Step 1: The function of mobile phone monitoring is enabled by default;

Click [] > [Cloud], you can view the server address,port & UID and download the APP for IOS or Android system by scanning the QR code.

Step 2: Register an APP account, log in as a user and Scan SN QR code to add the device (the SN QR code is from NVR device SN QR code, not the user manual showed SN QR code).

Note:Before using APP remote connection, make sure NVR connected to the internet.If the SN QR code does not appear, your NVR is not connected to the network. Please confirm that the RJ45 interface of the NVR is connected to the wired network and set up the network (step 2).

NVR

Cloud

Enable


Alexa/Google China


UUID


AuthKey

PID

SubPID

iOS 


Android 

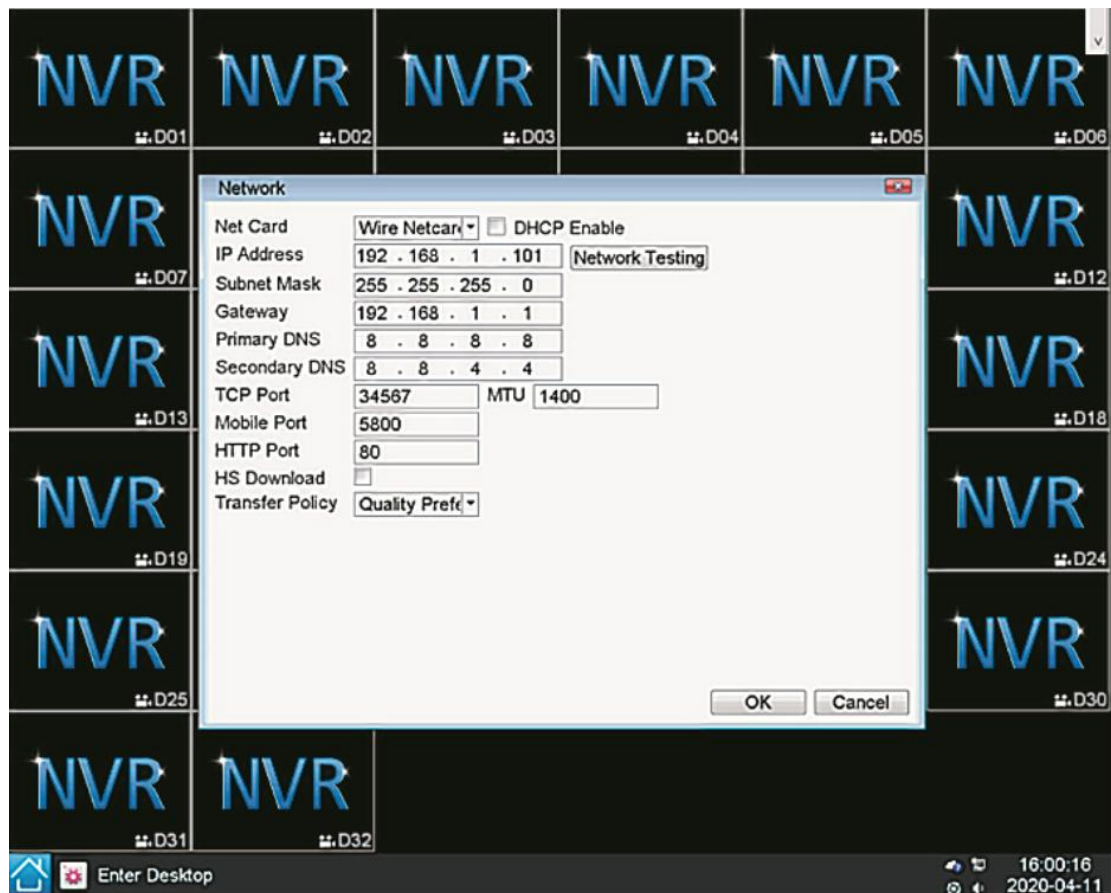
Cloud ID 

CH	Kb/s
1	250
2	0
3	0
4	0

NVR

2. Network settings

Make local network settings through the following ways: Click  > [Network]:



Attention: If the system indicates a connection to a network device, enter the network settings, choose DHCP and save, then turn it off and restart. After that, check for network connection. You can set the IP address, gateway, DNS of the NVR in the network settings menu.

Click [Network Testing] - > [PING] to test whether the NVR is connected to the router.

3. Add IPC

Click  -> [Camera];

Add IPC method:

1. [Quick Add]: Automatically add IPC in LAN for all channels
 2. [Add]: Check the added device and add IPC individually.
 3. [Manual Add]: Add IPC manually by inputting device IP and other information;
- Attention: If you don't find camera's IP or network errors in your NVR, you can do the following:
- 1) Open the app where the camera belongs and see if the Onvif switch is turned on.
 - 2) Confirm whether the camera Onvif password is correct in NVR.
 - 3) Check whether the network port is correct.

NVR D01 NVR D02 NVR D03 NVR D04 NVR D05 NVR D06

NVR D07 NVR D12

NVR D13 NVR D18

NVR D19 NVR D24

NVR D25 NVR D30

NVR D31 NVR D32

Camera

Online Equipment

13	<input type="checkbox"/>	IP Address	Port	Protocol	MAC	Add	Edit
1	<input type="checkbox"/>	192.168.1.3	34567	NPTS	c8:22:02:31:bd:28	+	↘
2	<input type="checkbox"/>	192.168.1.108	34567	NPTS	c8:22:02:18:d0:55	+	↘
3	<input type="checkbox"/>	192.168.1.112	3333	NPTS	c8:22:02:29:8b:93	+	↘
4	<input type="checkbox"/>	192.168.1.132	25002	NPTS	c8:6f:02:a3:cf:72	+	↘
5	<input type="checkbox"/>	192.168.1.230	34567	NPTS	F0:00:00:2F:28:05	+	↘
6	<input type="checkbox"/>	192.168.1.232	34567	NPTS	F0:00:00:35:32:58	+	↘
7	<input type="checkbox"/>	192.168.1.233	34567	NPTS	F0:00:00:38:2F:58	+	↘
8	<input type="checkbox"/>	192.168.1.235	34567	NPTS	F0:00:00:15:28:27	+	↘

Search Add Quick Add Quick Modify IP Protocol All

Added device

0	Channel	IP Address	Protocol	Edit	Delete	Connect

Delete Manual Add IPC PnP AutoSearch

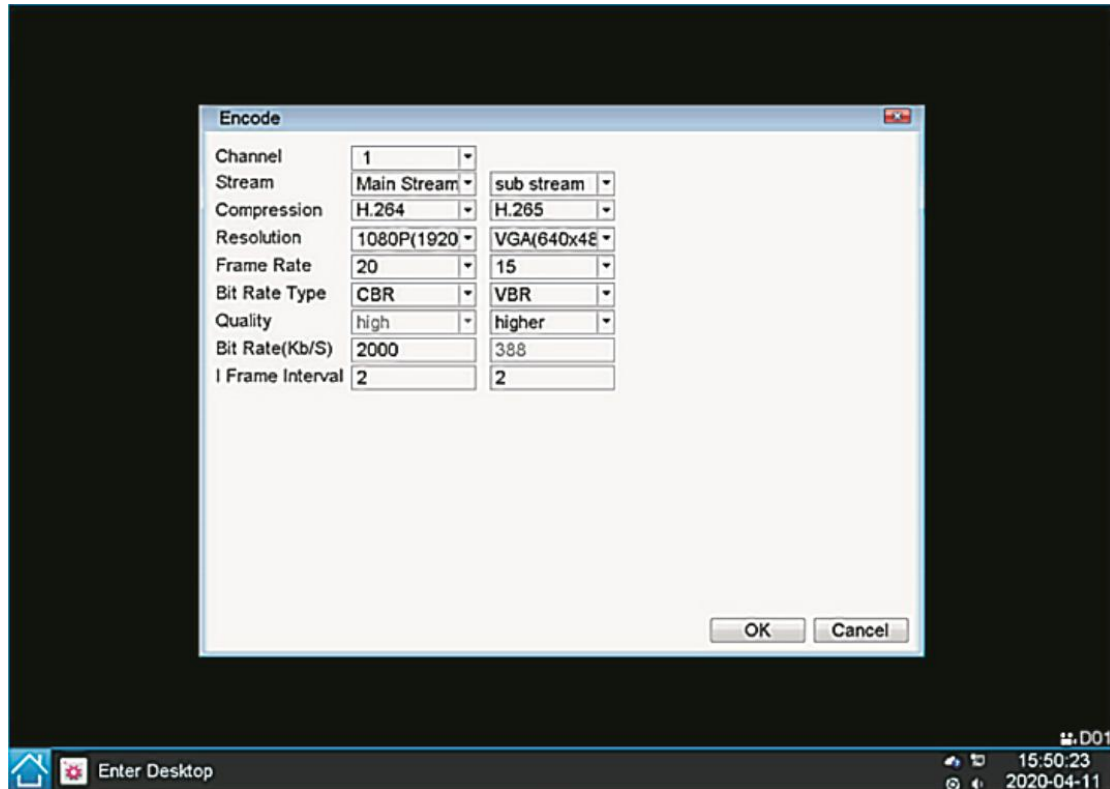
OK Cancel

Enter Desktop 15:31:01 2020-04-11


4. Encoding settings

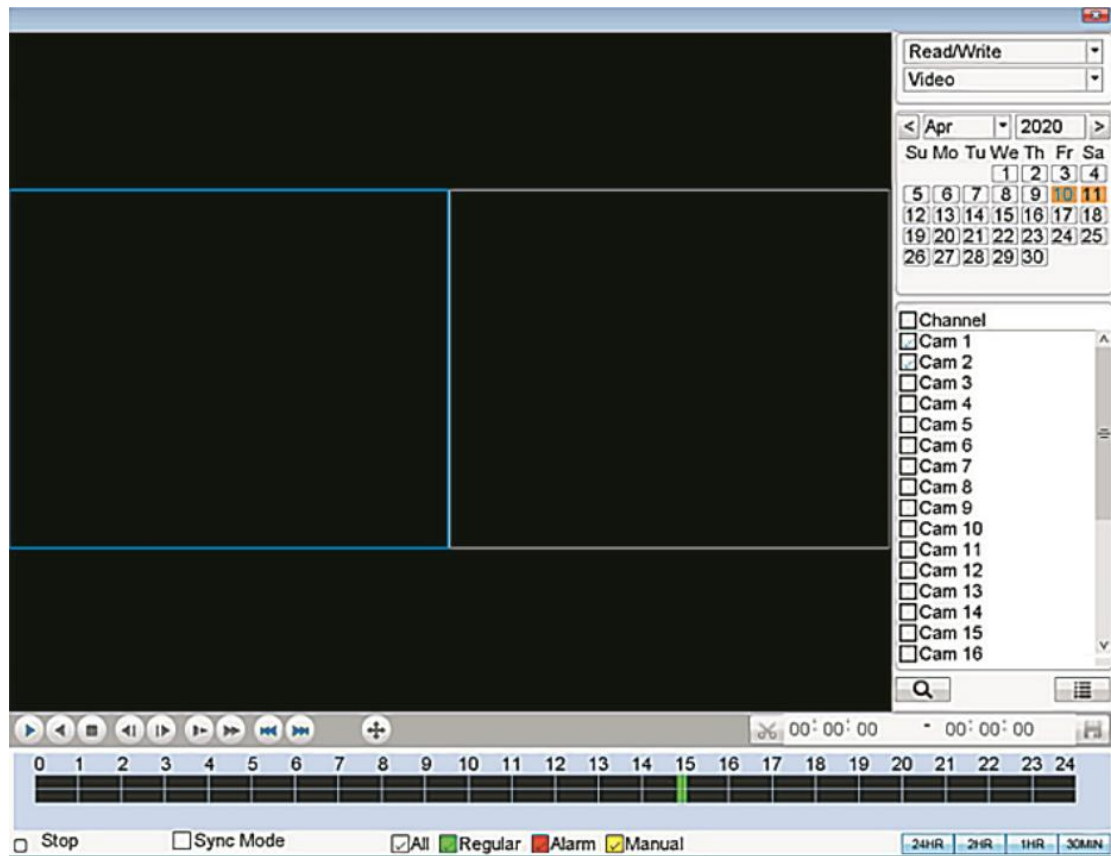
By setting the encoding parameters, it achieves the high-quality playback and remote monitoring capabilities.

Click[]-> [Encode];



5. Video playback

video playback includes video query, playback and other operations. Click []> [PlayBack]




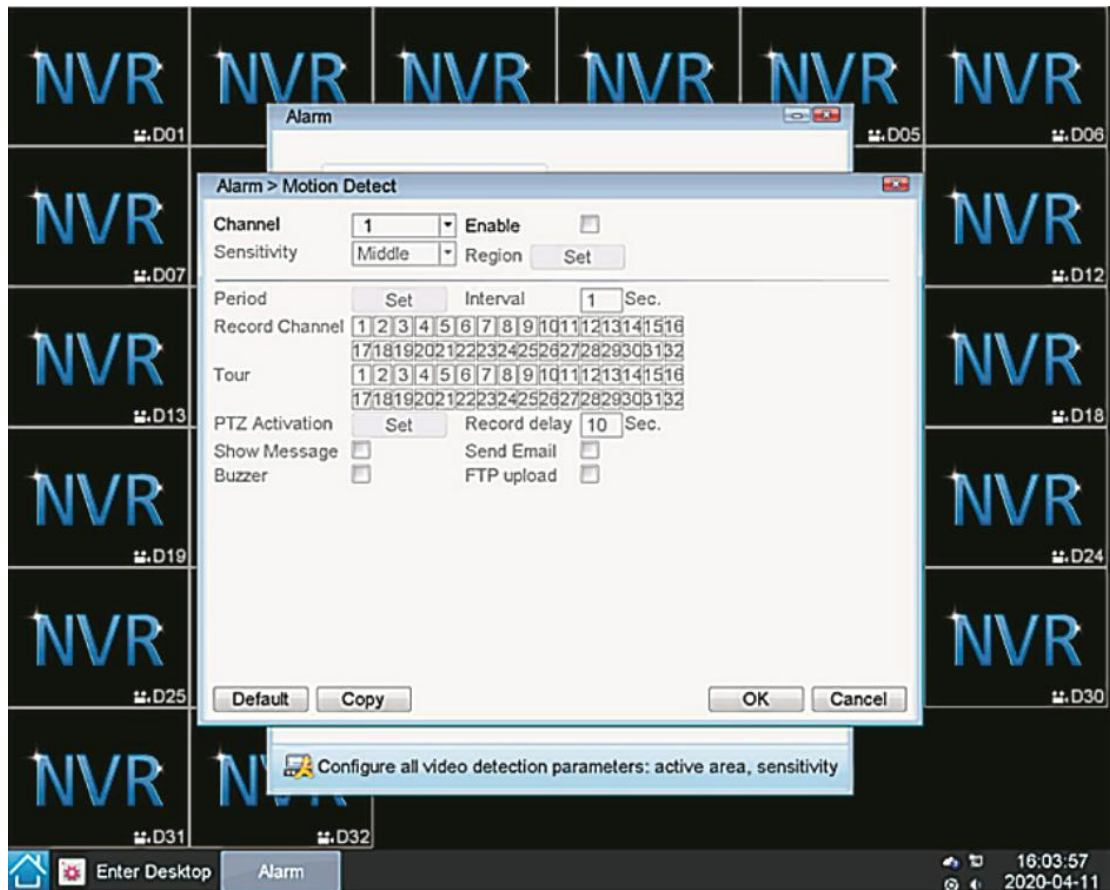
6. Motion detection settings

Motion detection is mainly divided into two parts:

Alarm function settings of motion detection (enable switch, sensitivity, detection area, the time period of arm and disarm and the time interval), that is, how to set to make an alarm. Linkage settings of motion detection (screen prompts, beep, alarm output and round tour) and others that need to be combined with other function settings (such as linkage recording and sending Email), that is, how to dispose after the alarm.

You can find the interface of function settings by the following means:

Click []> [Alarm]> [Motion Detect];

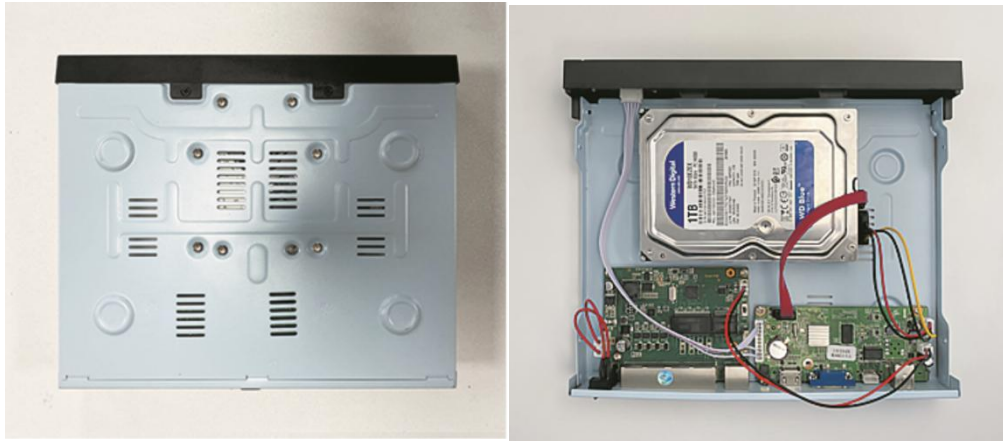


7. HDD Installation

Note:Power down the device before installing it.

1. Loosen the NVR side screw and remove the NVR cover.
2. The panel of the NVR, as shown in the figure below
3. Fix the hard disk to the chassis with screws, and insert the power cable and data cable into the hard disk
4. Tighten the screws on the side of the NVR.

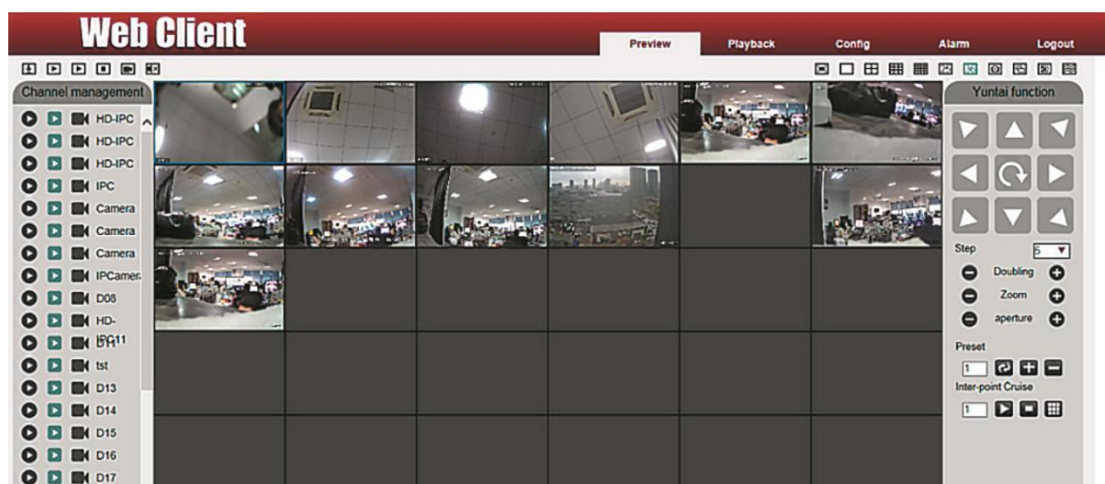




8. Other ways to manage NVR

Web access:

After the network connected, use a browser the PC comes with, Enter the IP Address of the NVR and press Enter, enter the account and password (the default account is admin, the password is empty) and log in the NVR for monitoring.



VMS access:

VMS is a professional software for monitoring of multi-devices, with advantages of safety, convenience, stability and unified management of multiple devices, etc. it's easy to install and do not need to download plug-ins. We recommend that customers use it. For details, please refer to the manual of VMS. Contact the seller to get a VMS.

